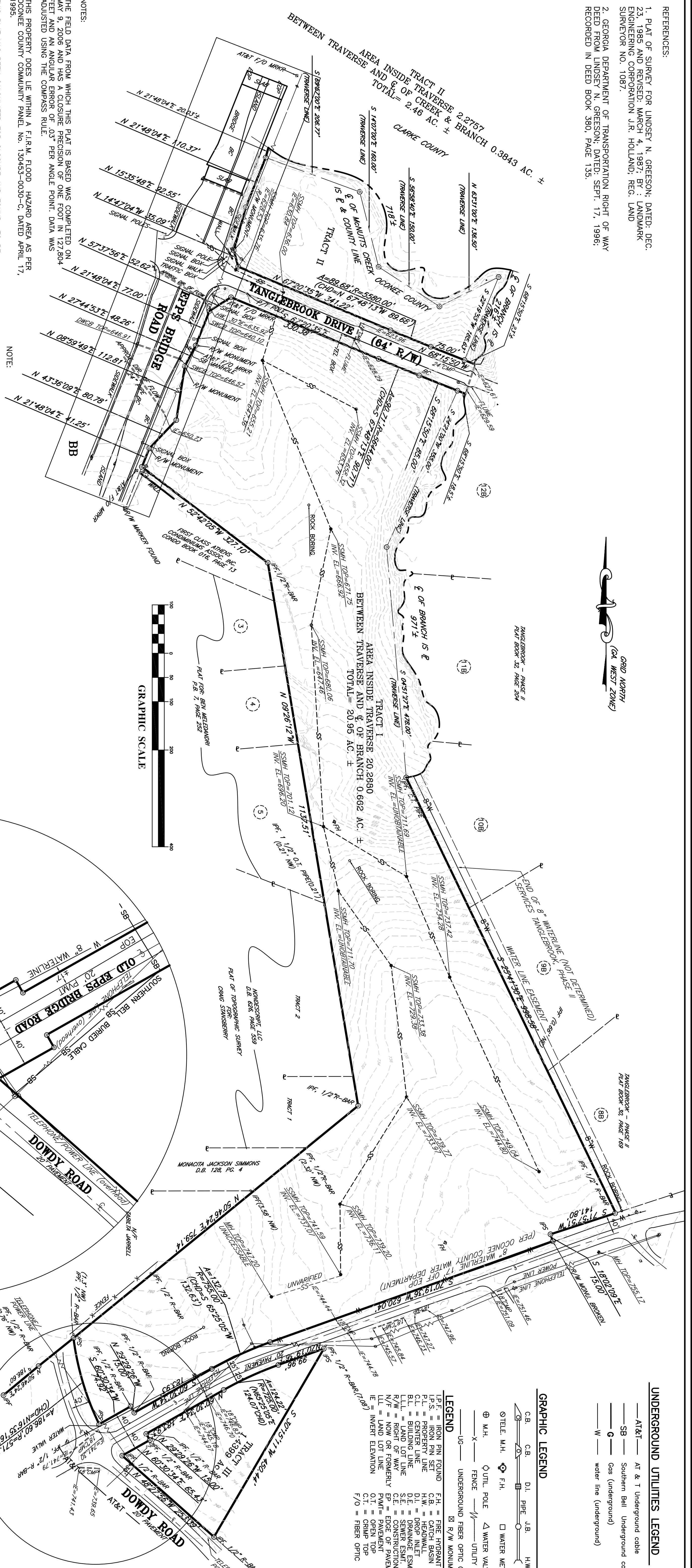


- REFERENCES:
1. PLAT OF SURVEY FOR LINDSEY N. GREESON, DATED: DEC. 23, 1985 AND REVISED: MARCH 4, 1987; BY: LANDMARK ENGINEERING CORPORATION J.R. HOLLAND; REG. LAND SURVEYOR NO. 1087.
 2. GEORGIA DEPARTMENT OF TRANSPORTATION RIGHT OF WAY DEED FROM LINDSEY N. GREESON, DATED: SEPT. 17, 1996; RECORDED IN DEED BOOK 580, PAGE 135.



NOTES:

THE FIELD DATA FROM WHICH THIS PLAT IS BASED WAS COMPLETED ON MAY 9, 2006 AND HAS A CLOSURE PRECISION OF ONE FOOT IN 127,804 FEET AND AN ANGULAR ERROR OF .03 PER ANGLE POINT. DATA WAS ADJUSTED USING THE COMPASS RULE.

THIS PROPERTY DOES NOT WITHIN A F.I.R.M. FLOOD HAZARD AREA AS PER OCONEE COUNTY COMMUNITY PANEL NO. 130453-0030-C, DATED APRIL 17, 1995.

THIS PLAT HAS BEEN CALCULATED FOR CLOSURE AND FOUND TO BE ACAPABLE WITHIN THE FOLLOWING TOLERANCES:

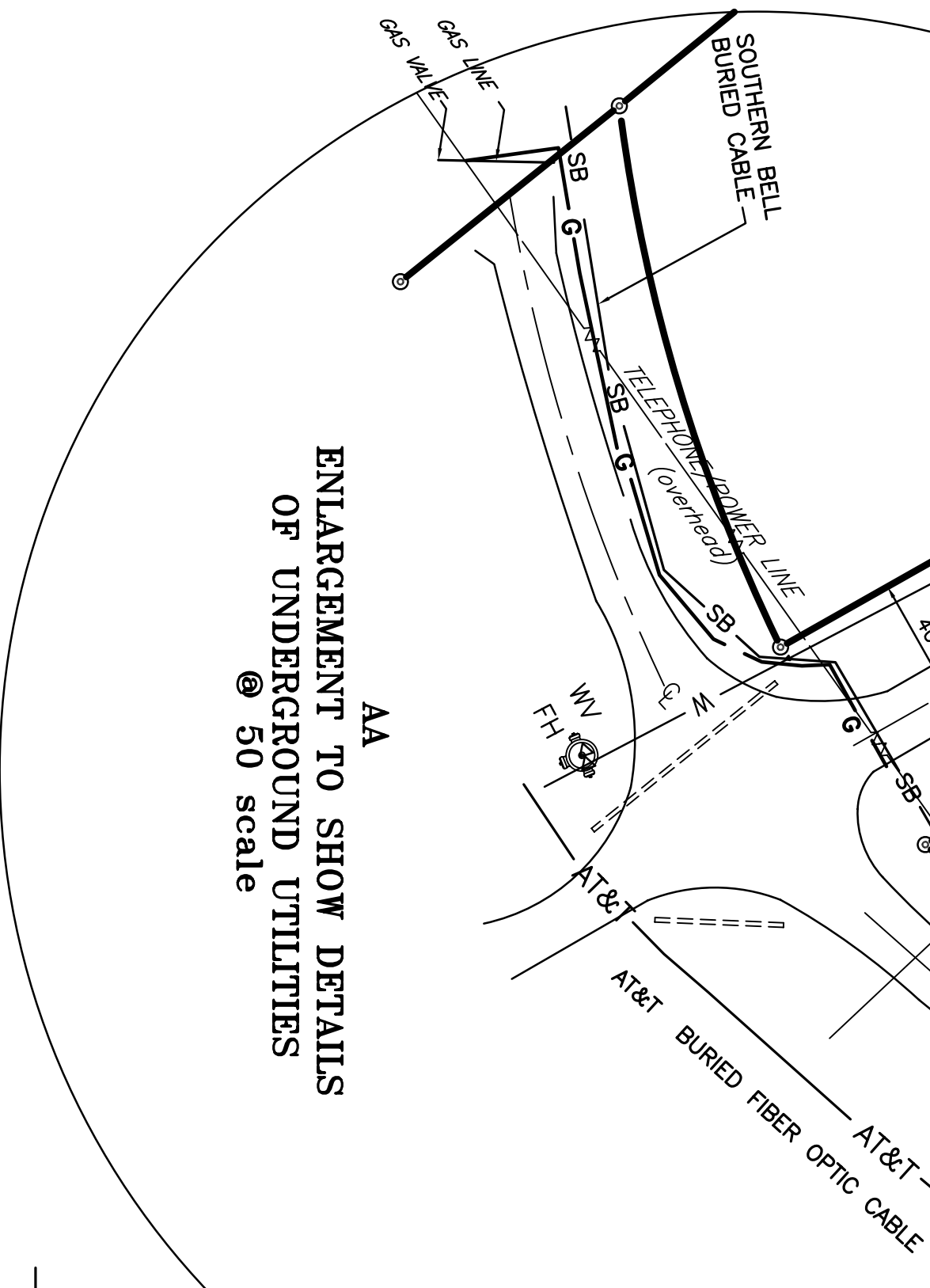
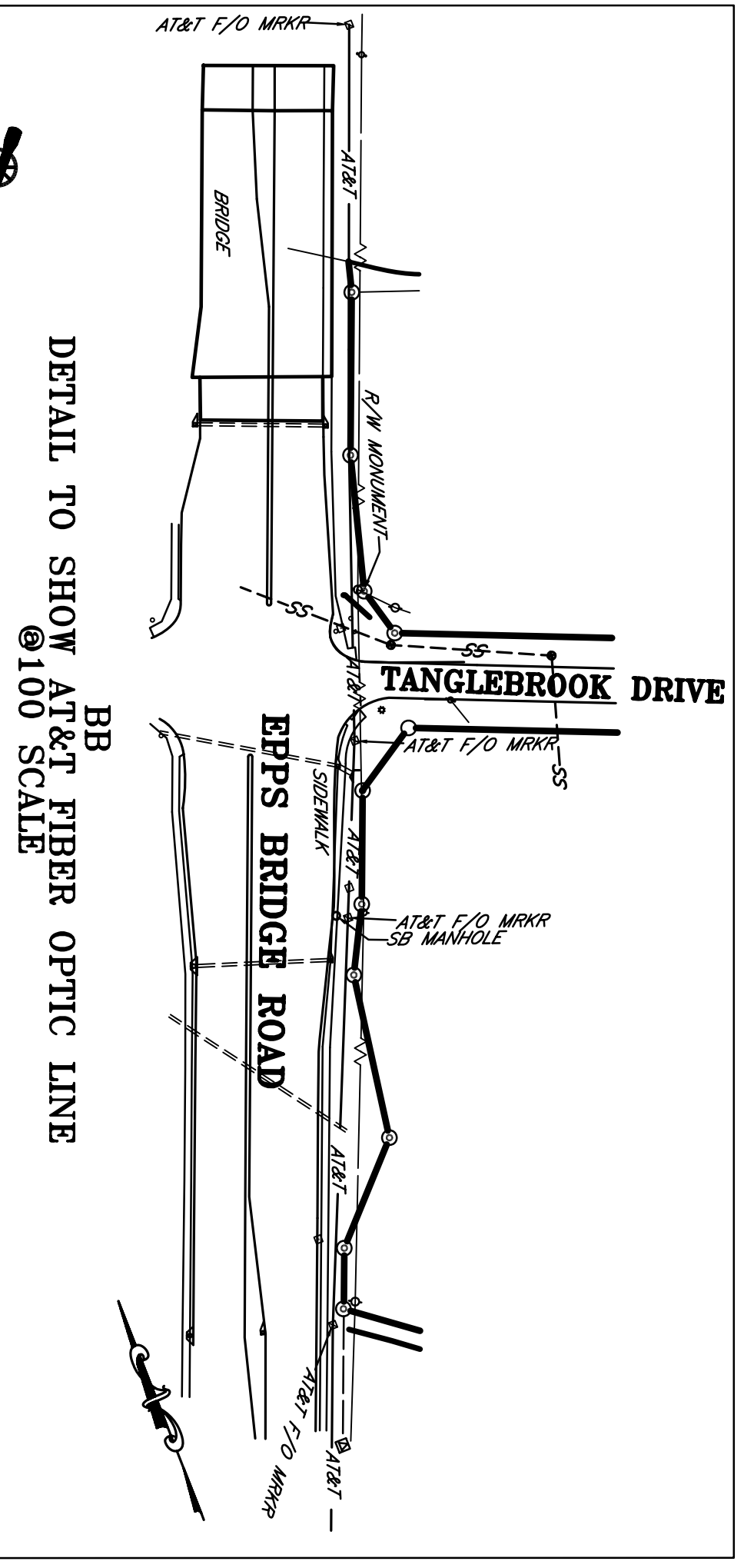
ONE FOOT IN 402,578 FEET—TRACT I — 20.954AC.
 ONE FOOT IN 284,053 FEET—TRACT II — 2.468 AC.
 ONE FOOT IN 347,250 FEET—TRACT III — 1.4399 AC.

EQUIPMENT USED TO OBTAIN FIELD DATA: TOPCON GTS-2110 & A STEEL TAPE.

ALL IRON PINS SET ARE 3" R-BAR.

NOTE:

1. NO INTERIOR IMPROVEMENTS LOCATED FOR THIS SURVEY OTHER THAN SANITARY SEWER.
2. PROPERTY IS NOW BEING USED AS A RESIDENTIAL TRAILER PARK.
3. UNDERGROUND UTILITIES SHOWN AS MARKED BY OTHERS. LOCATION OF WATER LINE ALONG OLD EPPS BRIDGE ROAD IS SHOWN AS PER DIRECTION OF WATER DEPARTMENT REPRESENTATIVE WHO MET US ON SITE. WATER LINE WAS NOT MARKED.



BOUNDARY & TOPOGRAPHIC SURVEY FOR:
MAXIE PRICE, JR.
 25.85 AC. ±

- UNDERGROUND UTILITIES LEGEND**
- AT&T — AT & T Undergound cable
 - SB — Southern Bell Undergound cable
 - G — Gas (Underground)
 - W — water line (Underground)
- GRAPHIC LEGEND**
- CB — C.B. — DI — PIPE — J.B. — H.W.
 - ⊙ TELE. M.H. ⊙ F.H. ⊙ WATER METER
 - ⊕ M.H. ⊕ UTIL. POLE ⊕ WATER VALVE
 - X — FENCE — — UTILITY LINE
 - US — UNDERGROUND FIBER OPTIC CABLE
 - ⊠ R/W MONUMENT
- LEGEND**
- I.P.F. = IRON PIN FOUND
 - I.P.S. = IRON PIN SET
 - C.L. = CENTER LINE
 - B.L. = BUILDING LINE
 - R.W. = RIGHT OF WAY LINE
 - L.L. = LAND LOT LINE
 - L.I. = LAND LOT LINE
 - E. = INVERT ELEVATION
 - O.T. = OPEN TOP
 - C.T. = CRAMP TOP
 - F/O = FIBER OPTIC
 - F.H. = FIRE HYDRANT
 - C.B. = CATCH BASIN
 - H.W. = DROP INLET
 - D.E. = DRAINAGE ESMT.
 - C.E. = CONSTRUCTION ESMT.
 - C.S. = CONSTRUCTION ESMT.
 - P.A. = PAVEMENT
 - O.T. = OPEN TOP
 - C.T. = CRAMP TOP
 - F/O = FIBER OPTIC

McNally & Patrick
 1505 HWY. 29 SOUTH - LAWRENCEVILLE, GA. 30044
 PHONE: (770)963-8520 FAX: (770)963-3984

LAND SURVEYORS
 CIVIL ENGINEERS
 LANDSCAPE ARCHITECTS

No.	DATE	REVISIONS
1.	06-01-06	SHOW UNDERGROUND UTILITIES

GMD #1331
 OCONEE COUNTY, GEORGIA

DATE: 06-01-06
 SCALE: 1"=100'

