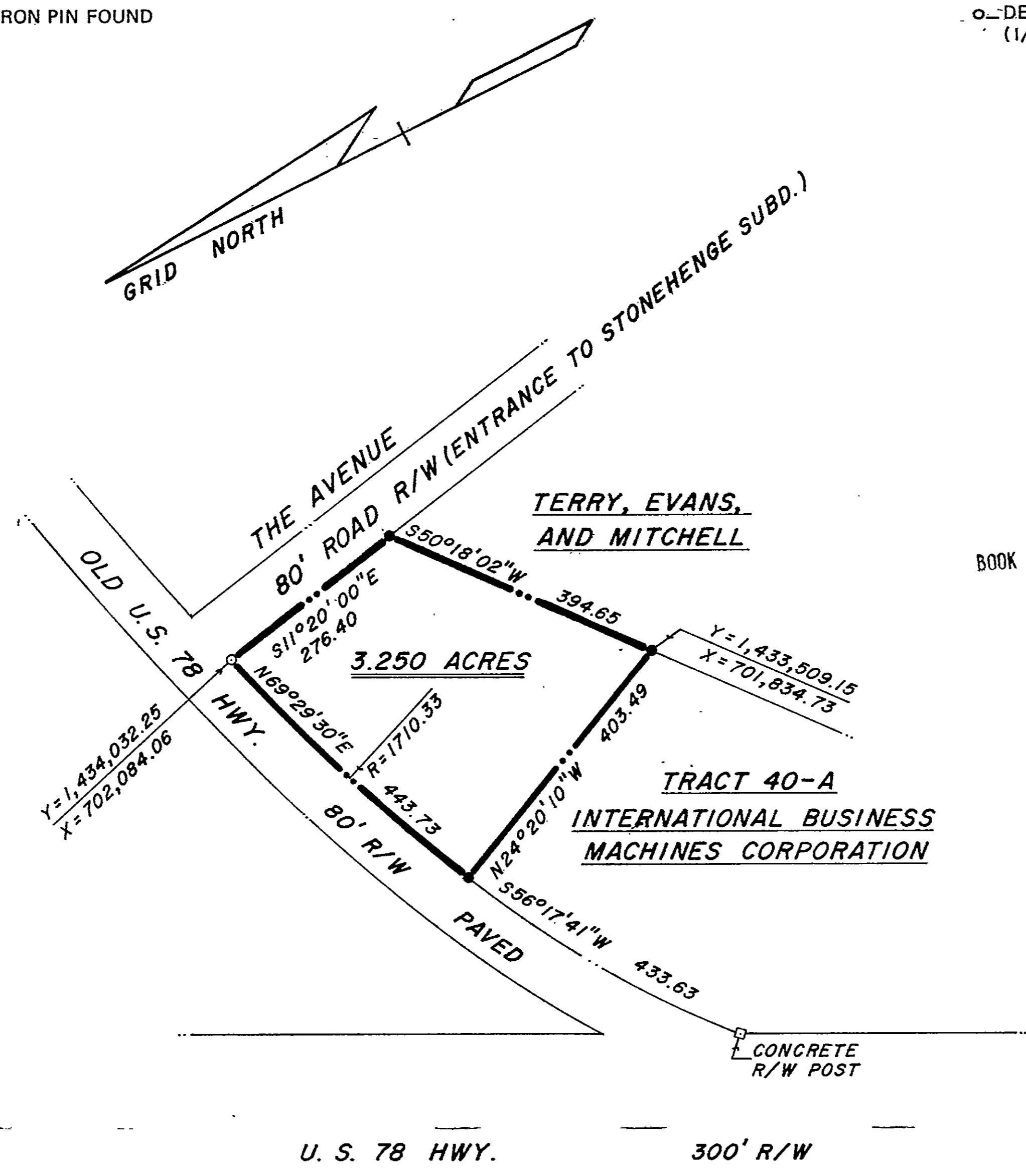


● DENOTES IRON PIN FOUND

○ DENOTES IRON PIN SET (1/2" REIN. ROD)

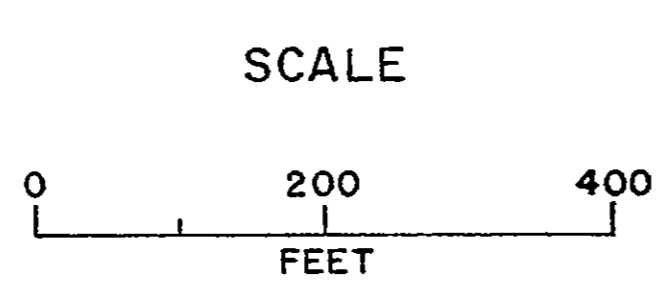


BOOK 425 PAGE 62

NOTES

- (1) COORDINATES SHOWN ARE STATE PLANE GEORGIA EAST SYSTEM, COMPUTED FROM GROUND MEASUREMENTS, NOT CORRECTED FOR SCALE FACTOR OR ELEVATION, STARTED FROM GEODETIC MARKERS 13A-71 AND 13A-72.
- (2) THE FIELD DATA UPON WHICH THIS PLAT IS BASED HAS A CLOSURE PRECISION OF 1/35,402.70 AND AN ANGULAR ERROR OF 04" TOTAL AND WAS NOT ADJUSTED.
- (3) PLAT CLOSURE = 1/303,654.0.
- (4) EQUIPMENT USED: ONE SECOND THEODOLITE AND EDM.

PLAT RECORDED
 IN PLAT BOOK... PAGE 249
 THIS DAY OF May 1981
 [Signature] CLARK



REFERENCE

- (1) OUR SURVEYS FOR INTERNATIONAL BUSINESS MACHINES CORP., DATED MAY 16, 1979, AND AUG. 30, 1979.
- (2) OUR SURVEY FOR B. HEYWARD ALLEN, JR., DATED FEB. 10, 1970.



SURVEY FOR		
CONWAY BROUN		
COUNTY: CLARKE	GMD: 241	STATE: GEORGIA
DATE: NOV. 9, 1979	SCALE: 1" = 200'	DWN. BY: DMG
FIELDBOOK: 436	SURVEYED BY: BEN MCLEROY AND ASSOCIATES, ENGINEERS & SURVEYORS INC. ATHENS, GA.	FILE NO.: 11,477-